

# National Museum Copenhagen

Local name	English name	Location	Country	Website	Role	Visit priority?
Nationalmuseet	National Museum of Denmark	Copenhagen	Denmark	<a href="http://www.natmus.dk/sw4509.asp">http://www.natmus.dk/sw4509.asp</a>	National museum of antiquities	High

## Basic information

From [website](#):

*"The National Museum is Denmark's largest museum of cultural history. The museum's main domicile is a classical 18th century mansion just a stone's throw from "Strøget" at the center of Copenhagen. The National Museum is the museum for all Denmark, where you can follow the history of the Danes right down to the present day. And you can get around the world from Greenland to South America."*

The *Nationalmuseet* is also responsible for a number of other museums.

## Mesolithic collections

With one of the longest histories of prehistoric archaeology in the world. Denmark's *Nationalmuseet* unsurprisingly contains a large amount of Mesolithic material.

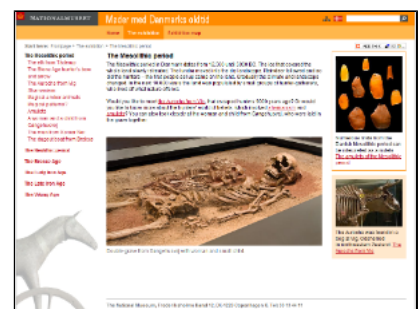
## Mesolithic presentation

### Web presentation

<http://oldtiden.natmus.dk/udstillingen/jaegerstenalderen/language/uk/>

Excellent website in Danish, English and German (be warned if one selects English on the home page the links to the detailed Mesolithic content disappear!).

The detailed coverage includes a number of highlight items. Good images throughout the pages include 3D interactive images of several items (eg, an [amber bear](#)).



What stands out is the integration of interpretive explanation with the presentation of discoveries. These range from explanations of [what amber is](#) to a [basic explanation of shamanism](#).

The Mesolithic portion forms the first section of the website portion dedicated to the *oldtid* (roughly equivalent to prehistory but including the Viking period). This web content parallels a major portion of the actual museum.